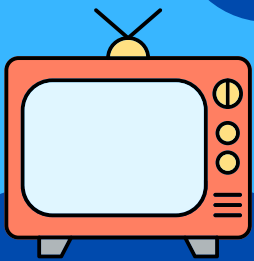


# SEND & SEMH

## Newsletter

Resources, articles and tips!

via clickable links



### "Inside our autistic minds"

BBC programme with Chris Packham  
• where he helps autistic people connect  
with friends and family in a new way.

### 2. An introduction to speech, language and communication

A free short online course about  
children's language and development



Resources to help with Anger  
from childline.

### 3.

This is a work in progress, and we want it to be useful for YOU so please tell us what you want to see. Mrs Adams, Mrs Mead and Mrs Griffin