

# SEND & SEMH

## Newsletter 24/25

Resources, articles and tips!

via clickable links

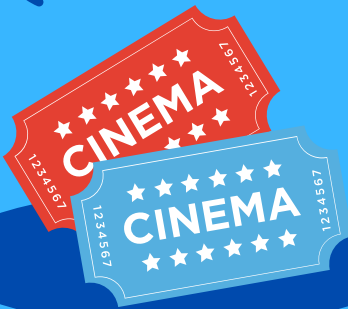


### Resource- Easy social skills activities for children

From "mindfulmazing" comes some great activities for working on those important social skills with your children.

### 2. Information - Mind Mapping

A fact sheet from Dyslexia Scotland on how mind mapping can support with organising thoughts.



### 3. Local Information - Autism Friendly Cinema Screenings

Dimensions works with cinemas to show autism friendly screenings at least once at month at all major cinemas chains across the UK.

### DID YOU KNOW...

"Autism Friendly" is sometimes referred to as relaxed or sensory friendly.

All feedback is welcome as we want it to be useful for YOU so please tell us what you want to see. Mrs Larkman, Mrs Mead and Mrs Griffin