

# Hayes Primary School

## Weekly Reminder



28th February 2020

Our Whole School target is for 97% of children to be in school

Our whole school attendance this week is 96.7%

EYFS – Flamingo 96.3% Puffin 96.3%, Robin 98.7%

KS1 – 1H 98% 1P 97.3% 1C 98% 2S 89%, 2C 97% 2I 94.7%

KS2 – 3H 96.7%, 3B 94.5%, 3W 95.7%, 4S 96.9%, 4L 98.4%, 4C 100%,

5N 96.4%, 5H 98.7%, 5B 98.8% 6M 94.5% 6S 98.8%, 6T 95.3%

Good attendance is vital for a child's education.

Please ensure your child is in school every day.

*Please be reminded we are a nut free school*

*This includes nut based spreads, sauces and pesto (which contains pine nuts) and must not be brought into school*

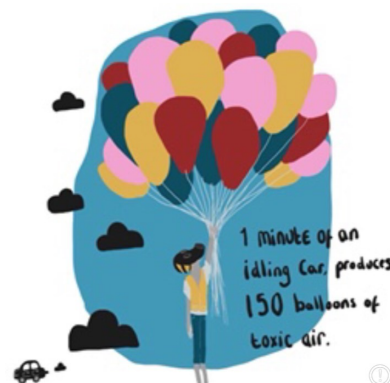
### Moving from ParentMail to ParentPay

Please be reminded, going forward ParentPay will be our means of communication to parents. Should you have any questions, please contact the school office via email.

### Idling is not permitted on the school grounds.

Please be reminded that Idling is not permitted anywhere on the school site.

Idling creates unnecessary noise and air pollution around the school, and is not pleasant for our pupils, neighbours and local residents. It is also reported that breathing in polluted air puts us all at a higher risk for asthma and other respiratory diseases.



### Waitrose Bromley – Token for Hayes Primary School – Hayes Primary School Community and Music Hub

Please be advised that the Hayes Primary School Community and Music hub is one of the charity options for your token when shopping at Waitrose Bromley.

If you are shopping and you would like to support the hub, it would be really appreciated.

### Hand washing

We have received some queries recently regarding hand washing in school. Please be advised that class teachers remind all pupils to wash their hands properly before having a snack, and before having their lunch.

Please also be advised that soap and hand towels are regularly checked and topped up in all the toilets in school throughout the day.



### Wellies

Please can you ensure that your child has appropriate clothing for the weather in school each day and a **named pair of wellies** to be stored in their class welly store.



### Parking and Driving on George Lane

Please be reminded to remain courteous towards our neighbours, and to park and drive sensibly in George Lane.

During the afternoon the school car park for EYFS and KS1 does not open until 3pm. Therefore, please do not enter George Lane until the car park is open as this causes serious congestion to our neighbours trying to enter and leave their properties, and would block access for emergency vehicles.

KS2 parents should only come into George Lane if it is absolutely necessary.

### Olive Dining

Olive Dining would really appreciate it if you are able to take some time to complete the attached survey regarding school meals. <https://www.surveymonkey.co.uk/r/HayesPrimaryParentSurvey>

### Reporting Absences - Daily

Please be reminded that any absences have to be reported to the school no later than 9am. ***An absence MUST be reported every day until your child returns to school, even if this is a continued absence.***

When reporting the absence, please provide full details including symptoms of illness so it can be correctly reflected in our records. This ensures we can follow our Safeguarding procedures. Please see the letter circulated 29<sup>th</sup> November for full details. Many thanks for your cooperation in this matter.

### Clubs at Hayes Primary School

All club information can be found on our School Website under "Pupils" then "Clubs". Please visit this site for all information regarding the clubs held at school.

**Clubs (Spring Term)** – the Clubs Timetable is available to download on the HPS website

[See Website for club flyers](#)

#### **NEW: KS2 YOGA CLUB**

A yoga club for KS2 will be starting the 11th March from 3.30-4.30pm at £6 per session.

A free trial session will be held Wednesday 4th March.

For booking, please contact Christina Burbridge: 07956 578494 [Christinaburbridge@icloud.com](mailto:Christinaburbridge@icloud.com)



### Walk to school Wednesdays

Our walk to school days will be held on the following dates:

Wednesday 11th March

Wednesday 25th March

Wednesday 29th April

Wednesday 20th May

Wednesday 24th June

Wednesday 1st July

The parent car park will be closed on these days.

Should you need to drive to school on the above dates, we would recommend parking and striding from either Hayes Street near the farm, or from the other side of Hayes Street, using our School Crossing Patrol.

It will be open for Breakfast Club drop-off and After-school club collection.

### Reporting Absences - Daily

Please be reminded that any absences have to be reported to the school no later than 9am. ***An absence MUST be reported every day until your child returns to school, even if this is a continued absence.***

When reporting the absence, please provide full details including symptoms of illness so it can be correctly reflected in our records. This ensures we can follow our Safeguarding procedures. Please see the letter circulated 29<sup>th</sup> November for full details. Many thanks for your cooperation in this matter.

### Donations of Tissues

We would continue to welcome any donations of tissues which the children can use in school. Therefore, if you are happy to provide a box of tissues, please hand it in to the School Reception– this would be greatly appreciated.

Many thanks to all those parents who have donated boxes of tissues.

This is really appreciated!

### Change of Collection

Please be reminded that should you have a change in collection, and the person collecting is not on your authorised list, please ensure an email is sent to [admin@hayes-pri.bromley.sch.uk](mailto:admin@hayes-pri.bromley.sch.uk) **before midday** on the day of collection.

This is to ensure the message is received and acknowledged by class teacher before the end of the school day. We understand some emergency situations can occur where this is not possible, however please endeavour to advise the school by email as early as possible.

Your cooperation in this matter is appreciated.

### Items for the day

It is essential that pupils have all the items they need for their day, with them when they come into school in the morning. This includes water bottles, packed lunches, musical instruments, sports kits etc.

It can be very unsettling for children if they do not have all of their necessary items with them, and can cause upset. Therefore, could we please ask that you ensure your children have everything they need for that day, with them when they come into school at drop off.

Many thanks for your support in this matter.

### Lunch Options

If your child is changing their dinner option, from packed lunch to school dinners for example, this needs to be communicated in writing to the school. A two week notice period is required– this is requested by Olive Dining.

Please be advised that the Spring Term 2020 school meal details and menu are now available on the school website.

### Lost Property

Lost property is housed at the front of the school by the picket fence should you wish to look for any lost items.



### Upcoming Dates

Monday 2nd March– Friday 6th March– Book Week 2020

Thursday 5th March– Dress up as a book character day

Friday 6th March– Year 4 Poet Visit

Friday 6th March– 3W class assembly in the large hall at 9.15am

Saturday 7th March– Year 3/4 Cross Country at Crystal Palace at 8.45-11am