

Hayes Primary School

Weekly Reminder



13th March 2020

Our Whole School target is for 97% of children to be in school

Our whole school attendance this week is 95.4%

EYFS – Flamingo 96.3% Puffin 96.3%, Robin 95%

KS1 – 1H 98% 1P 92.3% 1C 90.7% 2S 90.3%, 2C 94% 2I 95.7%

KS2 – 3H 94%, 3B 94.8%, 3W 97.9%, 4S 95%, 4L 97.8%, 4C 97.5%,

5N 97.1%, 5H 97.1%, 5B 98.8% 6M 92.4% 6S 99.7%, 6T 92.2%

Good attendance is vital for a child's education.

Please ensure your child is in school every day.

Please be reminded we are a nut free school

This includes nut based spreads, sauces and pesto (which contains pine nuts) and must not be brought into school

Moving from ParentMail to ParentPay

Please be reminded, going forward ParentPay will be our means of communication to parents. Should you have any questions, please contact the school office via email.

Water bottles

Please ensure that your child has a water bottle in school everyday that they are able to refill themselves.

Staff Restructure Consultation

The Spring Partnership Trust is currently undertaking a consultation process affecting the roles of staff who provide classroom support, such as Teaching Assistants. Any changes will be made from September 2020 and have been, and will continue to be, planned very carefully to ensure that all of our pupils benefit from ongoing effective and consistent educational support. The staff that children are familiar with will continue in their classes for the rest of this school year. Further information will be circulated to parents and carers at the end of the summer term on the outcome of the consultation.

Parents Evening

Parents Evening will be held on Tuesday 31st March and Thursday 2nd April. Appointments will be open for booking from 8pm on Monday 16th March, and will close again on Monday 23rd March at 8pm. An email should have been received which includes a link to book your appointment.

If you have not received this information, please email the school office as soon as possible at admin@hayes-pri.bromley.sch.uk. We look forward to seeing you all at Parents Evening.

Walk to school Wednesdays

Our walk to school days will be held on the following dates:

Wednesday 25th March

Wednesday 29th April

Wednesday 20th May

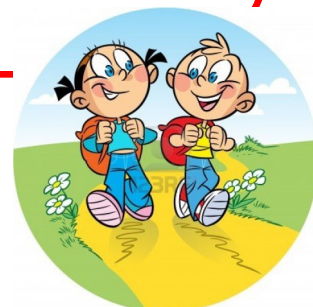
Wednesday 24th June

Wednesday 1st July

The parent car park will be closed on these days.

Should you need to drive to school on the above dates, we would recommend parking and striding from either Hayes Street near the farm, or from the other side of Hayes Street, using our School Crossing Patrol.

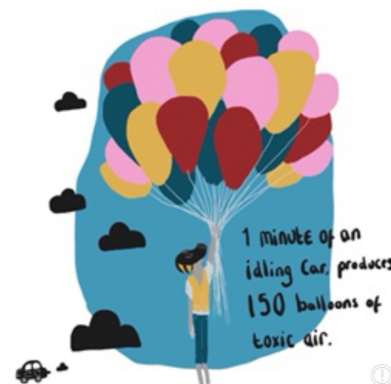
It will be open for Breakfast Club drop-off and After-school club collection.



Idling is not permitted on the school grounds.

Please be reminded that Idling is not permitted anywhere on the school site.

Idling creates unnecessary noise and air pollution around the school, and is not pleasant for our pupils, neighbours and local residents. It is also reported that breathing in polluted air puts us all at a higher risk for asthma and other respiratory diseases.



Hand washing

We have received some queries recently regarding hand washing in school. Please be advised that class teachers remind all pupils to wash their hands properly before having a snack, and before having their lunch.

Please also be advised that soap and hand towels are regularly checked and topped up in all the toilets in school throughout the day.

There are also regular assemblies about personal hygiene.



Wellies

Please can you ensure that your child has appropriate clothing for the weather in school each day and a **named pair of wellies** to be stored in their class welly store.



Parking and Driving on George Lane

Please be reminded to remain courteous towards our neighbours, and to park and drive sensibly in George Lane.

During the afternoon the school car park for EYFS and KS1 does not open until 3pm. Therefore, please do not enter George Lane until the car park is open as this causes serious congestion to our neighbours trying to enter and leave their properties, and would block access for emergency vehicles.

KS2 parents should only come into George Lane if it is absolutely necessary.

Clubs at Hayes Primary School

All club information can be found on our School Website under "Pupils" then "Clubs". Please visit this site for all information regarding the clubs held at school.

Clubs (Spring Term) – the Clubs Timetable is available to download on the HPS website

[See Website for club flyers](#)

Change of Collection

Please be reminded that should you have a change in collection, and the person collecting is not on your authorised list, please ensure an email is sent to admin@hayes-pri.bromley.sch.uk **before midday** on the day of collection.

This is to ensure the message is received and acknowledged by class teacher before the end of the school day. We understand some emergency situations can occur where this is not possible, however please endeavour to advise the school by email as early as possible.

Your cooperation in this matter is appreciated.

Donations of Tissues

We would continue to welcome any donations of tissues which the children can use in school.

Therefore, if you are happy to provide a box of tissues, please hand it in to the School Reception– this would be greatly appreciated.

Many thanks to all those parents who have donated boxes of tissues.

This is really appreciated!

Items for the day

It is essential that pupils have all the items they need for their day, with them when they come into school in the morning. This includes water bottles, packed lunches, musical instruments, sports kits etc.

It can be very unsettling for children if they do not have all of their necessary items with them, and can cause upset. Therefore, could we please ask that you ensure your children have everything they need for that day, with them when they come into school at drop off.

Lost Property

Lost property is housed at the front of the school by the picket fence should you wish to look for any lost items.



Reporting Absences - Daily

Please be reminded that any absences have to be reported to the school no later than 9am. ***An absence MUST be reported every day until your child returns to school, even if this is a continued absence.***

When reporting the absence, please provide full details including symptoms of illness so it can be correctly reflected in our records. This ensures we can follow our Safeguarding procedures. Please see the letter circulated 29th November for full details. Many thanks for your cooperation in this matter.

Lunch Options

If your child is changing their dinner option, from packed lunch to school dinners for example, this needs to be communicated in writing to the school. A two week notice period is required– this is requested by Olive Dining.

Please be advised that the Spring Term 2020 school meal details and menu are now available on the school website.

Upcoming Date

Friday 20th March– Mothers Day Tea Party EYFS in the small hall at 9am

Friday 20th March– 2C Class assembly at 9.15am in the large hall

Friday 20th March= pBuzz concert for 2I Parents at 2.40 in the large hall