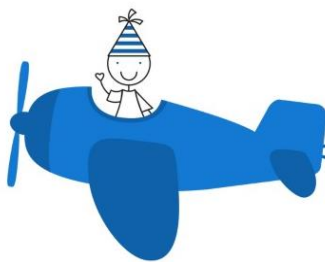


New for 2022...



The Bromley Children Project

Autism Family Support Service

Offering a universal service to all families with children with social communication difficulties (including Autism).

The London Borough of Bromley is committed to providing support to all families with children presenting with social communication difficulties (including Autism) and in 2021, a new part time post was created to reflect this promise.

The Autism Service Family Support Co-ordinator offers:

- A range of information sheets which seek to improve and develop parental knowledge around Autistic Spectrum Condition.
- A telephone & email service which offers guidance for next steps.
- A monthly newsletter highlighting items of interest to families with children with autism.
- Regular coffee morning/afternoons to provide a network of support for families.
- This post is not case holding and is a signposting service.

Bromley Mencap will be the Specialist Autism Family Support Service and will work with families who would benefit from short term intensive support and guidance. The aim of both services is to ensure that children with social communication difficulties (including Autism) and their families feel supported at home, in education and in their community.

Please note: Bromley MENCAP will not be accepting new self referrals.

Our Autism Service Family Support Co-ordinator is:

Cat Hardiman

Email: autisticspectrumcondition@bromley.gov.uk

Telephone: 0208 461 7697

Address: Blenheim Children and Family Centre
Blenheim Road
Orpington, Kent
BR6 9BH

(Working days are Monday to Thursday 9.30-2.00 p.m. We aim to respond to you within 48 hours)



www.bromleyiass.org.uk

020 8461 7630

iass@bromley.gov.uk

BROMLEY
AUTISM
PARTNERSHIP

