



How to contact:

Autism Family Support Service
Co-ordinator :

Cat Hardiman

Email address:

autisticspectrumcondition@bromley.gov.uk

Telephone: 0208 461 7697

*(Working days are Monday to Thursday 9.30-2.00 p.m.
We aim to respond to you within 48 hours)*

Address :

Blenheim Children and Family Centre
Blenheim Road
Orpington, Kent
BR6 9BH



www.bromleyiass.org.uk

020 8461 7630 iass@bromley.gov.uk



Please Follow us on Social Media

Please follow us on social media where we will be posting updates about our service and activities for families with children with social communication difficulties (including Autism).



[The Bromley Children Project - Facebook Page](#)



[The Bromley Children Project – Instagram Page](#)



[The Bromley Children Project - Creative Kids](#)



Autism Family Support Service

Offering a universal service to all families with children with social communication difficulties (including Autism).

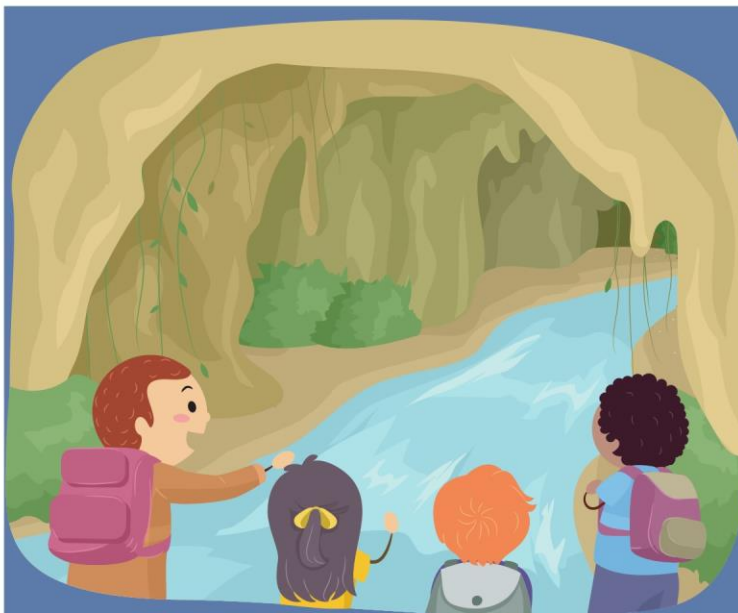


Blenheim Children and Family Centre,
Blenheim Road,
Orpington,
BR6 9BH



What next.....?

1. Contact the Autism Service Family Support Co-ordinator.
2. Sign up to some of the Autistic Spectrum Condition Seminars which are offered by the Bromley Children Project.
3. Read about Autism.
4. Attend the next Coffee Morning.
5. Be your child's greatest supporter.
6. Love your child for the person they are, not for the person you hoped they would be.



A quote about autism

Temple Grandin very famously said.....

"What would happen if the autism gene was eliminated from the gene pool?

You would have a bunch of people standing around in a cave, chatting and socializing and not getting anything done."

We need to recognise the strengths and talents of our autistic community and focus more on what our children can do, rather than what they can't do.



Our services

The London Borough of Bromley is committed to providing support to all families with children presenting with social communication difficulties (including Autism) and in 2021, a new part time post was created to reflect this promise.

The Autism Service Family Support Co-ordinator offers :

- A range of information sheets which seek to improve and develop parental knowledge around Autistic Spectrum Condition.
- A telephone helpline which offers advice and guidance for next steps.
- A monthly newsletter highlighting items of interest to families with children with autism.
- Regular coffee morning/afternoons to provide a network of support for families.

Bromley Mencap will be the Specialist Autism Family Support Service and will work with families who would benefit from short term intensive support and guidance.

The aim of both services is to ensure that children with social communication difficulties (including Autism) and their families feel supported at home, in education and in their community.

Please note: Bromley Mencap will not be accepting new self referrals.